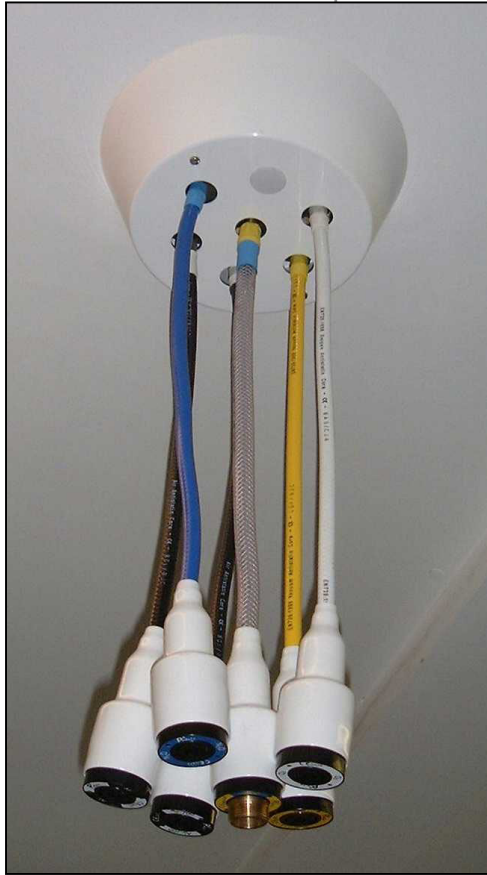


FLEXIBLE PENDANT



Description

P3 Flexible Pendants comprise a **Ceiling Plate and Cover Kit, 1st Fix NIST Connectors and Hose Assy's** incorporating '*Axis*' Terminal Units .

'*Axis*' Terminal Units are available for **oxygen, nitrous oxide, 50% oxygen/50% nitrous oxide mixture, medical air, surgical air, medical vacuum and AGSS.**

The **Ceiling Plate & Cover Kit** comprises of a **folded zinc coated steel plate with provision for 1 or up to 7 gases, 1st fix NIST connectors and an epoxy powder coated cowl.** The **1st fix NIST connectors** incorporate a **maintenance valve, which will automatically shut off the gas supply if the Hose is removed whilst the pipeline system is under pressure.** All **NIST connectors** are supplied with a **Blank Nut as Standard.**

Flexible Pendant Hose Assemblies consist of a length of **colour-coded hose with permanently crimped gas specific connectors at each end.** One end will be a **NIST nut and nipple to connect to the 1st Fix NIST at the ceiling,** the other end of the hose will be **crimped directly to the terminal unit first fix assy.** The hose assembly also incorporates a **cowl to slide over the '*Axis*' Terminal Units.**

The **first fix assembly** comprises of a **machined brass block, which is mounted in a fire resistant, heat retardant ABS housing.** The unit is indexed for each different gas service to prevent interchangeability. The unit incorporates a **maintenance valve, which will automatically shut off the gas supply if the second fix assembly is removed whilst the pipeline system is under pressure.**

The **check valve assembly** comprises of a **spring-loaded valve housed in a machined brass body.** The check valve permits the gas to flow when a probe is connected and seals off the gas flow when the probe is disconnected.

The **second fix assembly** comprises of a **gas specific body which accepts, retains and releases the probe.** The base of the body is indexed to match the first fix assembly. The front face of the second fix assembly incorporates a **colour coded gas identity label.** The unit will only accept the probe for the appropriate service.

The **second fix assembly** comprises of a **gas specific body which accepts, retains and releases the probe.** The base of the body is indexed to match the first fix assembly. The front face of the second fix assembly incorporates a **colour coded gas identity label.** The unit will only accept the probe for the appropriate service.

Designed to meet the requirements of;

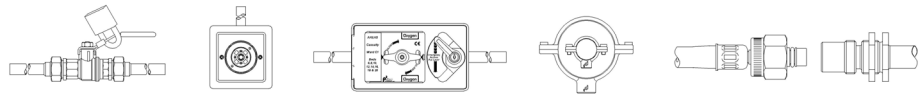
- **HTM 2022** **Medical Gas Pipeline Systems.**
- **C11** **NHS Model Engineering Specification – Medical Gases.**
- **BS EN 737-1:1998** **Terminal units for compressed medical gases and vacuum.**



Phoenix Pipeline Products Limited.

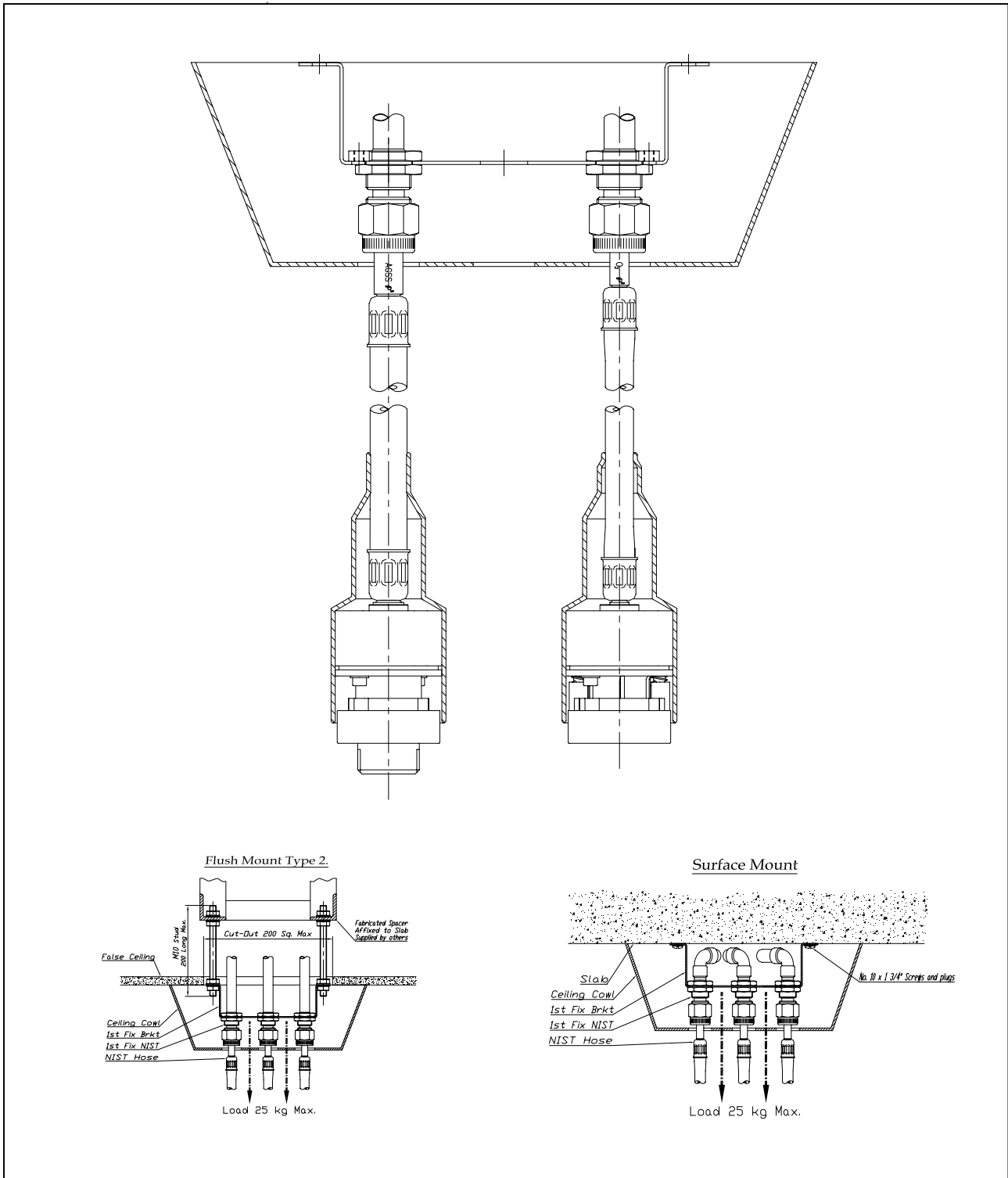
Unit 8, McKenzie Industrial Park,
Bird Hall Lane,
Stockport,
U.K., SK3 0SB

Tel No.: 44 (0) 161 428 7200
Fax No.: 44 (0) 161 428 7010
www.p3-phoenix.com
Email: info@p3-phoenix.com



FLEXIBLE PENDANT

Technical Details



Phoenix Pipeline Products Limited.

Unit 8, McKenzie Industrial Park,
Bird Hall Lane,
Stockport,
U.K., SK3 0SB

Tel No.: 44 (0) 161 428 7200
Fax No.: 44 (0) 161 428 7010
www.p3-phoenix.com
Email: info@p3-phoenix.com